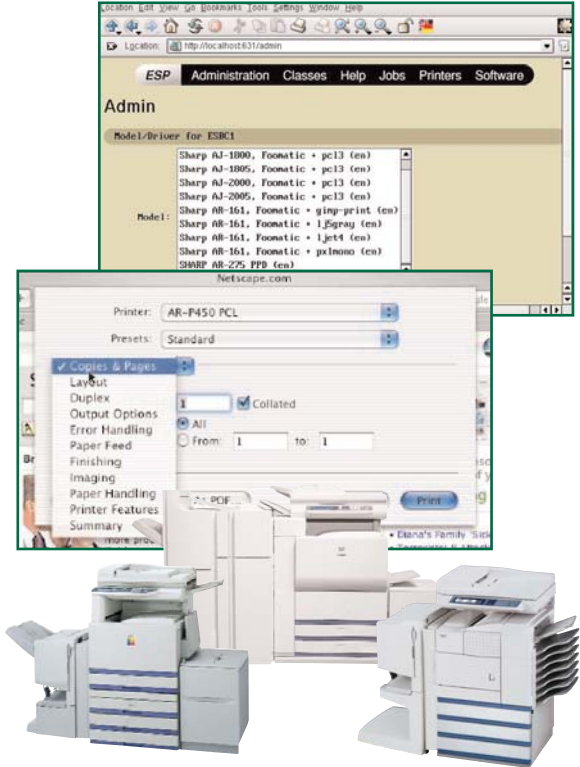


Access for full functionality directly from Linux, MAC and UNIX

Working in a Linux, MAC or UNIX environment? No problem! Now you can unlock the powerful functionality of Sharp's extensive range of multifunction devices directly from your Desktop. With an easy-to-use interface, users can create professional looking documents more efficiently, print locally or remotely to any networked Sharp printer or MFP.

Choose from a wide range of advanced finishing options including folding, stapling, saddle-stitching and automatic booklet creation. To access these features simply install the correct PPD (Postscript Printer Description) or PCL support file to bring fast, flexible printing to the entire department. To ensure maximum compatibility, the Sharp drivers for Linux, MAC and UNIX environments were developed with the help of the creators of CUPS, Easy Software Products. The drivers provide the intuitive CUPS interface for easily accessing the functionality of Sharp multifunction IMAGERS.



key features

- **Print professional looking documents** directly from Linux, MAC and UNIX environments.
- **Easily access** multifunction device capabilities:
 - Paper/Output tray selections
 - Stapling
 - Orientation
 - Duplexing options
- **Utilize print management capabilities:**
 - **Add/Remove** printers
 - **Inspect and manage** job queues
 - **Print test page**



What is CUPS?

- CUPS (Common UNIX Printing System) provides:
 - Support for directly-connected and networked printers.
 - Direct printing of PostScript, PDF, text, HP-GL/2, and image files.
 - An easy-to-use web-based management interface.
 - Printer accounting (printer, user, time, and # pages for every job printed).
 - Efficient client/server printing for all platforms.
- CUPS is the standard printing system on Mac OS X 10.2 and above and with most versions of Linux.



Sharp Digital Imager Compatibility

Digital IMAGER	Speed	Function	MAC Support *	Linux Support **
AR-M160/M205 series	16/20 ppm B/W	P/C/S/F	Yes	Yes
AR-162 series	16 ppm B/W	P/C/S/F	Yes	Yes
AR-168 series	16 ppm B/W	P/C/S/F	Yes	Yes
AR-M207 series	20 ppm B/W	P/C/S/F	Yes	Yes
AR-M237/M277 series	23/27 ppm B/W	P/C/S/F	Yes	Yes
AR-M350/M450 series	35/45 ppm B/W	P/C/S/F	Yes	Yes
AR-M355/M455 series	35/45 ppm B/W	P/C/S/F	Yes	Yes
AR-P350/P450 series	35/45 ppm B/W	P	Yes	Yes
AR-M550/M620/M700 series	55/62/70 ppm B/W	P/C/S/F	Yes	Yes
AR-C260M	17 ppm color/26 ppm B/W	P/C/S	Yes	Yes
AR-BC260	17 ppm color/26 ppm B/W	P/C/S/F	Yes	Yes
AR-BC320	26 ppm color/32 ppm B/W	P/C/S/F	Yes	Yes

MAC Product Support *

- Full support for 10.2, 10.3 and above.

Linux Product Support **

- Sharp CUPS drivers support Linux environments but full functionality with all Linux distributions is not guaranteed. The following Linux environments have been tested with the Sharp drivers:
 - Red Hat 9.0
 - Fedora Core 3.0
- Sharp offers a special Printer Setup and Configuration GUI to maximize Sharp's MFP functionality.
- Linux support with the following limitations:
 - Saddle Stitch is supported when the Pamphlet option and 2 staples are selected.
 - The following functions are not supported:
 - Confidential Print, Hold and Print, FTP Printing, Configuration, Separator Page, Printer Status and Post select Insertion when applicable.

UNIX Product Support

- For UNIX environments support such as (AIX, HP-UX, IRIX, OSX and SOLARIS) users need to install Sharp Linux drivers in addition to purchasing "ESP Print Pro" software. The ESP Print Pro software can be purchased from Easy Software Products (<http://www.easysw.com/>) 1-301-373-9600.

Driver Distribution

- Contact your local authorized Sharp Dealer.



Design and specifications subject to change without notice.

Sharp is a registered trademark of Sharp Corporation. All other trademarks and registered trademarks are property or their respective holders.

Sharp Electronics Corporation • Sharp Plaza • Mahwah, NJ 07430-1163
1-800-BE-SHARP

www.sharppusa.com

SHARP®